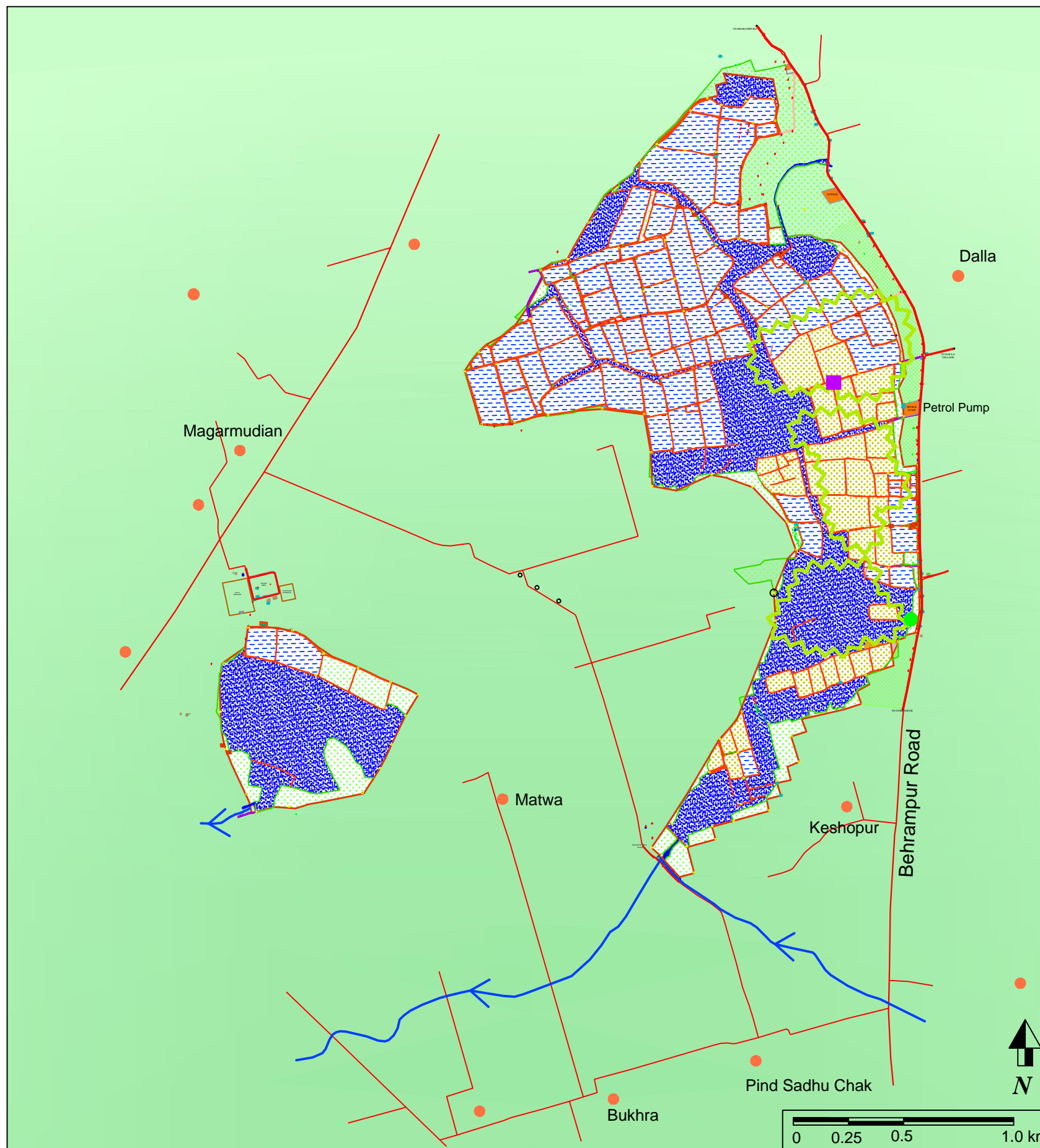


# Landuse / Landcover of the wetland and Areas with high bird congrigation



- Areas with high bird congrigation
  - Boundary of the Keshopur Wetland
  - Land with Panchayat mostly unleased, with heavy growth of haysinth
  - Leased ponds with shallow depth (up to 1m), mostly under lotus and shingada cultivation
  - Leased ponds with greater depth (more than 1m), mostly under fish farming
  - Land under agricultural use or grasslands
- 
- Temporary houses of fish farmers / lotus cultivators
  - Existing Watch Tower
  - Existing Bird Hide
  - Farm Bund
  - Settlements
  - Road Network
  - Draiange of the Region
  - Electric Pole
  - Existing Tree
  - Culvert
  - Hand Pump
  - Transformer
  - Benchmark with Pillar
  - Temporary Bench mark

IDIPT-PUNJAB  
(Infrastructure Development Investment Program for Tourism Punjab)  
(Punjab Heritage and Tourism Promotion Board)

DSC, SHAH TECHNICAL CONSULTANTS PRIVATE LIMITED IN  
ASSOCIATION WITH GRASSROOTS RESEARCH CONSULTANCY, MUMBAI

PROJECT :Development Of Community Based ECO-TOURISM  
Facilities At Keshopur Weland

NOTES:  
1. Eco sensitivity of the site to be considered during implementation  
2. excavation depth to be as per drawing details only.  
3. All dimensions are in mm.  
4. All written dimensions to be followed.  
5. Drawings not be measured or scaled.

NO.	DATE	REVISIONS

SHEET TITLE: LANDUSE/LANDCOVER OF THE WETLAND

SCALE : NTS

DRAWING NO : KCCR / DRG. 2

DRAWN BY : VINEET WAGHE

CHECKED BY: PALLVI LATKAR

DATE : FEB'2013

